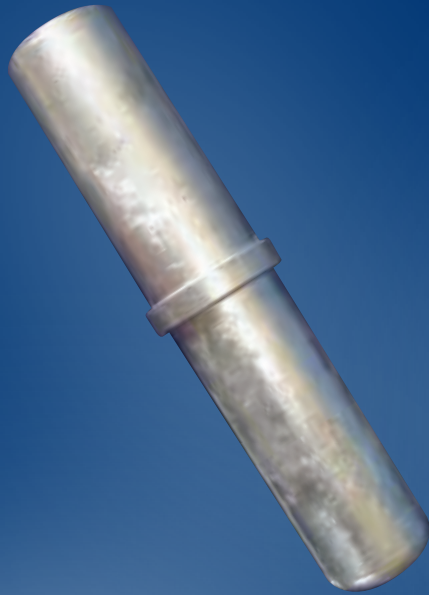


# ULLRICH ALUMINIUM CASTING CATALOGUE



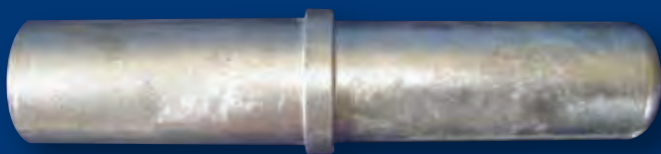
## CONTENTS

■ <b>I 800 Series Scaffold</b>	Page <b>3</b>
■ <b>Marine</b>	Page <b>6</b>
■ <b>Miscellaneous</b>	Page <b>8</b>
■ <b>Ladder Accessories</b>	Page <b>12</b>
■ <b>Fence and Balustrade</b>	Page <b>14</b>
■ <b>Leverlock Scaffold Parts</b>	Page <b>21</b>
■ <b>Anodes</b>	Page <b>26</b>

---

For additional information on any Ullrich product, either contact your Ullrich Sales Consultant, refer to the back of this brochure for your nearest Ullrich Aluminium Sales Centre, or phone for assistance 0800 500 338 (NZ) or 1300 650 075 (Australia).





**Code: UCI950**  
**SPIGGOT 1800**  
Scaffold spigot - Fits UA1246 (50 x 2 tube)

**Code: UCI900**  
**OLD SHORT T**  
Scaffold Tee - Fits UA1246 (50 x 2 tube)  
- both branches



**Code: UCI901**  
**OLD LONG T**  
Scaffold Tee - Fits UA1246 (50 x 2 tube) - both branches

**Code: UCI902**  
**OLD LONG SLEEVES**  
Scaffold sleeve long - Fits UA1246 (50 x 2 tube)





**Code: UC1903-1800**  
**SNAPLOCK ASSY 1246 TUBE COMPLETE**  
Snaplock assembly - fits into and over UA1246  
(50 x 2 tube)



**Code: UC1903A**  
**OLD SNAPLOCK COMPLETE**  
Old snaplock - fits into and over UA1246 (50 x 2 tube)  
- superseded by UC1903-1800.



**Code: UC1904**  
**OLD TONGUE**  
Spare lever/tongue for UC1903A

**Code: UC1905**  
**OLD PLATFORM HOOK**  
Fits UA1730 Scaffold Section



**Code: UC1911**  
**OLD SHORT SLEEVE**  
Scaffold sleeve short - fits over UA1246 (50 x 2 tube)





**Code:** UC1910  
**SCAFFOLD END CAP 1800 SERIES**  
Plugs into UAI246 (50x 2 tube)



**Code:** UC1992  
**SCAFFOLD ALL ANGLE WELD ON**  
Takes into UAI246 (50x 2 tube)



**Code:** UC1985  
**SCAFFOLD UNI JOINT 1800 SERIES**  
Universal Joint - Fits UAI246 (50 x 2 tube)





Code: UCI912  
OFFSET HINGE  
Cast Aluminium Hinge



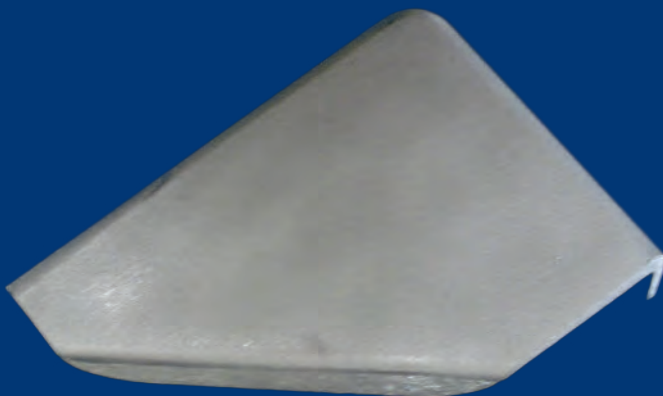
Code: UCI913  
FLAT HINGE  
Cast Aluminium Hinge



Code: UCI915  
CANOPY HINGE  
Cast Aluminium Hinge

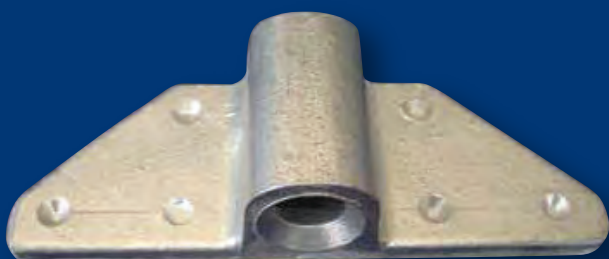


Code: UCI916  
ROPE HOOK  
Used on boats & trailers (not certified)



Code: UCI993  
CAST BOAT CORNER  
Stern corner protection/  
lift point for dinghies





Code: UC1917  
**ROWLOCK BLOCK**  
Fits on dinghies for oars



Code: UC1934  
**BOAT HOOK**  
For retrieving ropes on boats



Code: UC1918  
**BOW RAIL END CAP**  
For rail around boat windscreens



Code: UC1924  
**BOLLARD**  
Used on boats



Code: UC1996  
**DINGHY BOW CAP**  
Cast bow cap for dinghies



Code: UC1503  
**BOAT CLEAT**  
Horn cleat for securing rope on boats





**Code:** UCI919  
**L. MUDGUARD CLAMP 50MM**  
For truck mudguards. Fits UA1246  
(50 x 2 tube)



**Code:** UCI936  
**MUDGUARD BASES**  
Bolts to truck Chassis - for use with mudguard clamps



**Code:** UCI933  
**WELL END CAP**  
End cap for rubber of supermarket trolley buffer rails

**Code:** UCI968  
**SAW HORSE END CAP**  
Used for Australian saw horses







**Code:** UC1922  
**LARGE FLAGPOLE TOP**  
Fits onto UA1247 (100 x 3 tube)

**Code:** UC1921  
**SMALL FLAGPOLE TOP**  
Fits onto UA1251 (50 x 3 tube)



**Code:** UC1999  
**ULLTRASIGN BOX CORNER**  
Fits UA6696 ACP box frame



**Code:** UC1945  
**SEAT END CAP**  
Fits UA4473 seating section



**Code:** UC1946  
**SEAT END CAP TOP**  
Fits seat back extrusion





Code: UC1500  
END CAP TO SUIT UA6758  
30 X 180 elliptical louvre

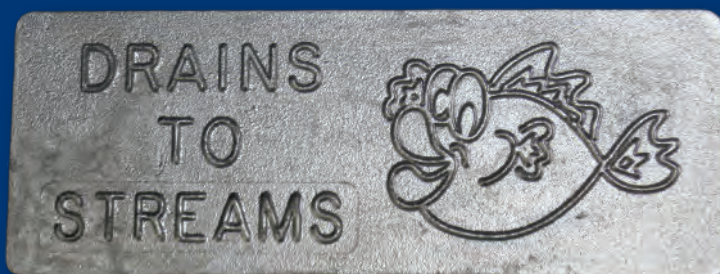


Code: UC1989  
END CAP TO SUIT  
UA5354 LOUVRE BLADE  
20 X 110 elliptical louvre



Code: UC1986A  
PLAQUE: DRAINS TO SEA  
154 X 60 X 4mm thick

Code: UC1986B  
PLAQUE: DRAINS TO STREAM  
154 X 60 X 4mm thick





**Code:** UCI914  
**WC PARTITION FEET**  
Toilet Partition feet. Height 150mm

**Code:** UCI906  
**UAC NAMEPLATE**  
Can be welded/screwed/glued onto any Ullrich product.  
Dimensions 51 x 90 x 5mm thick



**Code:** UCI907  
**AUSTRALIAN PLANK CAP**  
Used for ends of trestle planks in Australia

**Code:** UCI908  
**NZ PLANK CAP**  
Used on end of UAC Aluminium





Code: UC1925

**MEDIUM LADDER BLOCK**

Fits SL ladder stiles & UA1191 (40 x 6 flat).  
Used for pit ladders.



Code: UC1926

**LARGE LADDER BLOCK**

Fits SL ladder stiles & UA1192 (50 x 6 flat).  
Used for pit ladders.



Code: UC1927

**SCAFFOLD LADDER HOOK**

Fits into side stile of scaffold ladder and  
hooks onto scaffold tube

Code: UC1928  
**NO 2 LADDER HOOK (EACH SIDE)**  
Used on GRDE S2 ("D" rung)

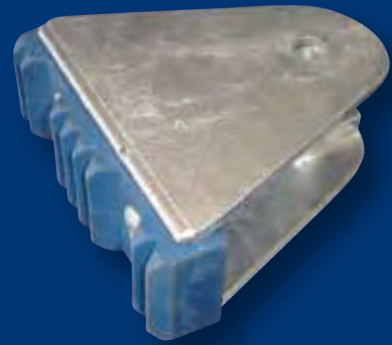


Code: UC1935A  
**TRESTLE HINGE COMPLETE**  
Used on tradesman trestles



Code: UC1931  
SWIVEL FOOT

Fits onto bottom of ladder



Code: UC1935A  
TRESTLE HINGE COMPLETE

Used on tradesman trestles



Code: UC1319A  
SCAFFOLD SNAPLOCK FLAT ASS

Flat fits into Ladder side stile DE & SL



Code: UC1990  
HDS LADDER HINGE

Cast hinge block for Heavy Duty  
Step ladder range





**Code:** UCI932  
AK.SMALL. FENCE BASE

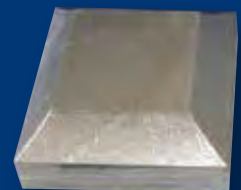


**Code:** UCI941  
SPEARS  
Fencing decorative spears - fit into UA1968 (20 x 1.6 tube)

REFER PAGE 20 FOR FULL RANGE OF SPEARHEADS AVAILABLE

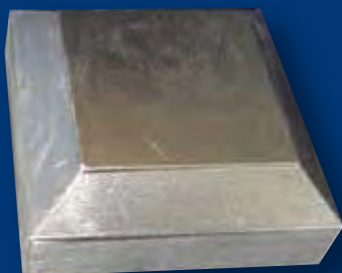


**Code:** UCI942  
MODULAR BRACKET  
Used for fencing - fits into UA1988 (20 x 40 x 1.6 RHS) & UA2132/2131 Fence extrusion



**Code:** UCI943  
FENCE CAP 50MM  
Fence post cap - fits UA1214 (50 x 3 square tube)

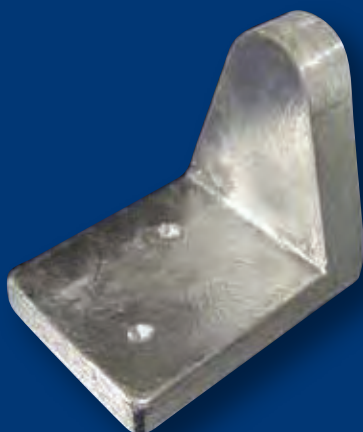




**Code: UCI944**  
**FENCE CAP 75MM**  
Fence post cap - fits UA1215 (75 x 3 square tube)



**Code: UCI947**  
**LARGE GATE HINGE**  
Mates with UCI948

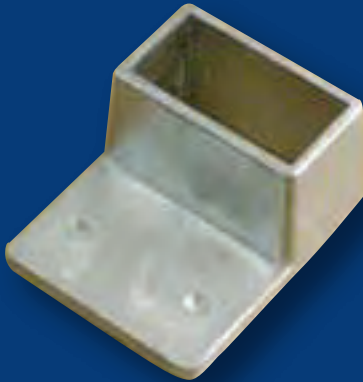


**Code: UCI948**  
**SMALL GATE HINGE BLANK**  
Mates with UCI947 & UCI948A



**Code: UCI948A**  
**SMALL GATE HINGE ROUND HOLE**  
Mates with UCI948





**Code:** UCI963

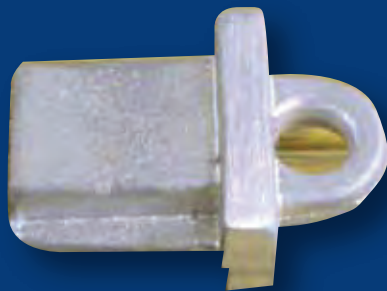
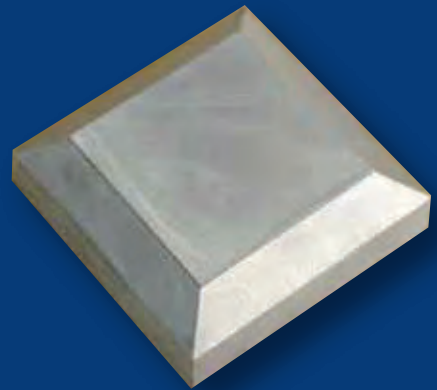
**1/2 MODULAR BRACKET**

Used for fencing - fits over UA1988 (20x40x1.6 RHS) & UA2132/2131 fence rail extrusion

**Code:** UCI940

**FENCE CAP**

Fence post cap - fits UA1213 (100x3 square tube) & wooden fence posts



**Code:** UCI939

**FENCE FLEXI BRACKET FEM**

Fits into UA2131/UA2132 (fence rail extrusion)  
Mates with UCI938

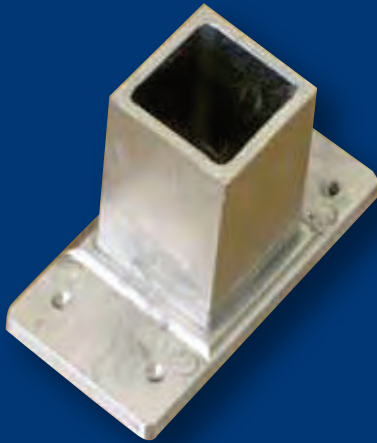
**Code:** UCI938

**FENCE FLEXI BRACKET MALE**

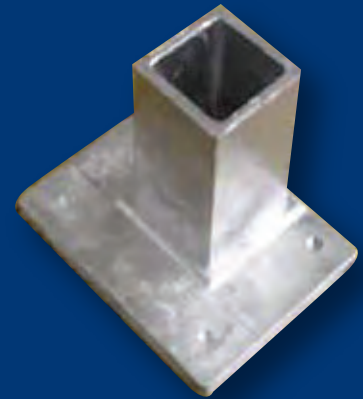
Bolts/Rivets to post/wall mates with UCI939



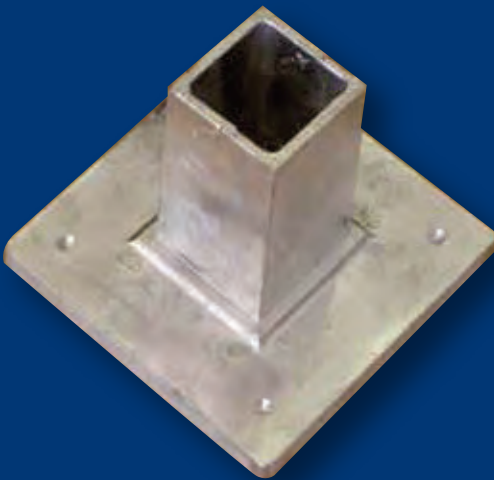




**Code:** UC1983  
**FENCE POST BASE 1/2**  
Fits into UA1214 (50x3 square tube)



**Code:** UC1982  
**FENCE POST BASE 3/4**  
Fits into UA1214 (50x3 square tube)



**Code:** UC1981  
**FENCE POST BASE FULL**  
Fits into UA1214 (50x3 square tube)

**Code:** UC1984  
**FOOTBALL FENCE SPEAR**  
Fencing decorative football shaped spear  
Fits into UA1968 (20x1.6 tube)

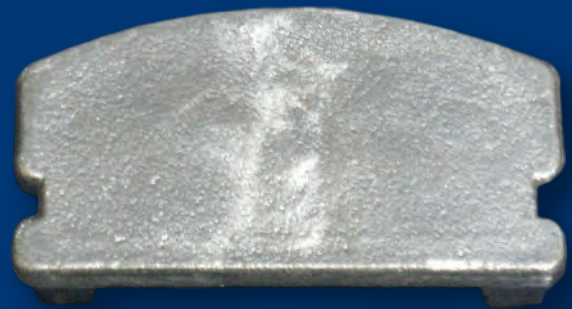


REFER PAGE 20 FOR FULL RANGE  
OF SPEARHEADS AVAILABLE

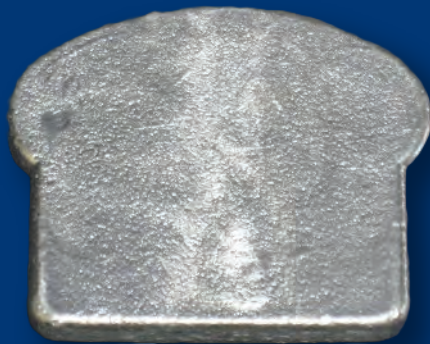




Code: UCI987  
HANDRAIL END CAP  
Fits balustrade handrail UA2098



Code: UCI994  
HANDRAIL END CAP  
Fits balustrade top rail UA3596



Code: UCI995  
HANDRAIL END CAP  
Fits balustrade handrail UA2164



Code: UCI501  
HANDRAIL END CAP  
Fits balustrade handrail UA7090





**Code:** UCI998  
**FENCE POST BASE - 75mm**  
Takes 75 x 3 square tube UA1215



**Code:** UCI997  
**BALUSTRADE POST BASE**  
Takes 60mm inside square tube



**Code:** UCI988  
**HEAVY DUTY GATE HINGE**  
Mates with UCI948



**Code:** UCI502  
**POST END CAP**  
Fits balustrade post UA7085



# FENCING - DECORATIVE SPEARHEADS



1



2



3



4



5



6



7



8



9



10



11



12



13



14



15



16



17



Button Top



**Code:** UC1201  
**SCAFFOLD PLATFORM HOOK**  
Offset scaffold platform hook - fits into UA3114



**Code:** UC1301  
**SCAFFOLD LOCK CAP**  
Leverlock female joiner - mates with UC1302 - fits onto UA1309 (48.6 x 2.3 tube)



**Code:** UC1302  
**SCAFFOLD LOCK CLAMP**  
Leverlock male joiner - mates with UC1301 - fits onto UA1309 (48.6 x 2.3 tube)



**Code:** UC1303  
**SCAFFOLD 45 JOINT**  
Leverlock joint - fits over UA3019 (48.6 x 2.3 Tube) - UA2268 (32 x 2 tube) spigots onto 45 degree branch





Code: UCI304

SCAFFOLD Y JOINT

Leverlock joint - fits over UA3019 (48.6 x 2.3 Tube) - UA2268 (32 x 2 tube) spiggots onto 45 degree branches

UCI306

SCAFFOLD TUBE BRKT CLAMP

Bolts to wall - Female leverlock mates with UCI301 - used for removable signs etc.



Code: UCI307

SCAFFOLD UNI JOINT

Universal joint - plugs into UA3019 (48.6 x 2.3 tube) - Used outrigger clamps & foot plates

Code: UCI308

SCAFFOLD OUTRIGGER CLAMP

Clamping jaw - part of of outrigger clamp assembly UCI802





**Code:** UCI309  
**SCAFFOLD END CAP**  
Plugs into UA3019 (48.6 x 2.3 tube)



**Code:** UCI310  
**SCAFFOLD T JOINT**  
Leverlock scaffold tee - fits UA3019  
(48.6 x 2.3 tube) both branches



**Code:** UCI315A  
**SCAFFOLD SNAPLOCK ASS**  
Leverlock snaplock - fits into and over UA3019  
(48.6 x 2.3 tube)



**Code:** UCI317  
**SCAFFOLD SINGLE END**  
Leverlock Scaffold sleeve - fits over UA3019 (48.6 x 2.3 tube)



**Code:** UCI318  
**SCAFFOLD DOUBLE T**  
Leverlock Scaffold double tee - fits UA3019  
(48.6 x 2.3 tube)- all branches



**Code: UC1401**  
**SCAFFOLD WINGNUT**

Has internal thread which fits threaded shafts. Used as part of leverlock scaffold castor (shafts not included)



**Code: UC1401/I302W**  
**SCAFFOLD WELDED SHAFT ASS**

Part of leverlock castor assembly (shafts not included)



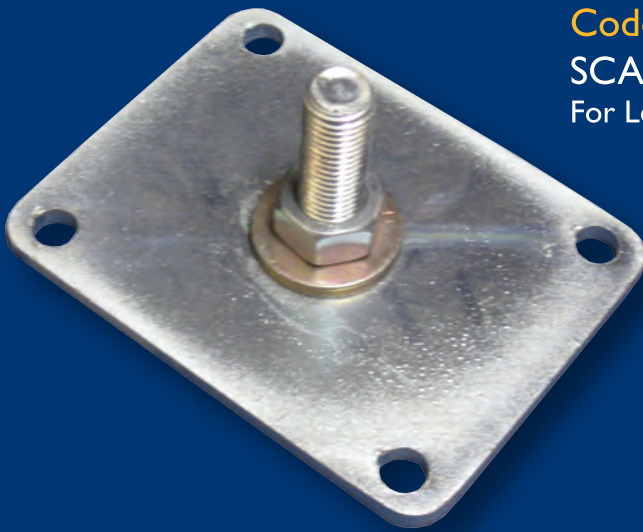
**Code: UC1402**  
**SCAFFOLD FOOTPLATE**  
Compatible with scaffold threaded shafts



**Code: UC1403**  
**SCAFFOLD OUTRIGGER PLATE**  
Compatible with UC1307 universal joint







**Code: UCI404**  
**SCAFFOLD CASTOR PLATE**  
For Leverlock scaffolds



**Code: UCI801**  
**SCAFFOLD OUTRIGGER HANDLE**  
Part of outrigger clamp assembly



**Code: UCI802**  
**OUTRIGGER CLAMP COMPLETE**  
Fits into UA3019 (48.6 x 2.3 tube)

**Code: UCI401S**  
**SCAFFOLD SHAFT ONLY**

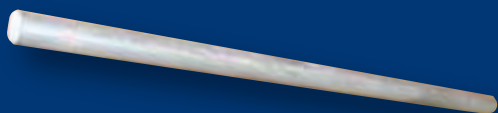
Aluminium threaded shaft used on Leverlock castor assembly. Compatible with UCI402, UCI401



**Code: UCI400S**  
**STEEL SCAFF SHAFT ONLY**

Steel threaded shaft used on Leverlock castor assembly. Compatible with UCI402, UCI401

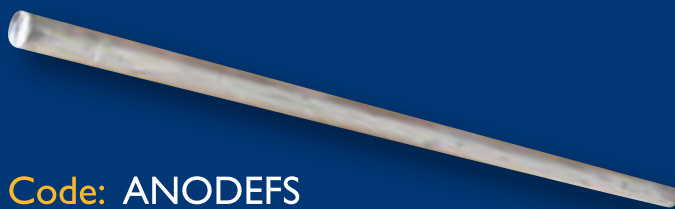




**Code: ANODEI6RODZ**  
Zinc. 16mm diameter rod 400mm long



**Code: ANODEBAR**  
Alloy. 400x30x20mm



**Code: ANODEFS**  
Alloy. Water Tank Anode 950x26mm diameter

**Code: SACRIFICIAL ANODE JET UNIT**  
M8 thread. Approx. 22mm x 25mm dia.



**Code: ANODES1.5KG**  
Alloy. 110x145x40mm

**Code: ANODES3.5KGZ**  
Zinc. 110x145x40mm

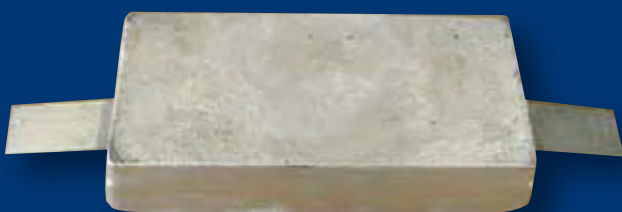
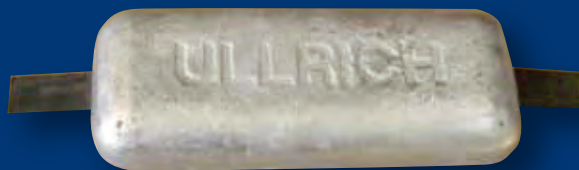
**Code: ANODES1.0KG**  
Alloy. Teardrop

**Code: ANODES2.5KGZ**  
Zinc. Teardrop



**Code:** ANODES3.0KG  
Alloy. 305x130x40mm

**Code:** ANODES7.5KGZ  
Zinc. 305x130x40mm



**Code:** ANODES5.0KG  
Alloy. 290x130x60mm

**Code:** ANODES12.5KGZ  
Zinc. 290x130x60mm

**Code:** ANODES8.0KG  
Alloy. 600x135x35mm

**Code:** ANODES20.0KGZ  
Zinc. 600x135x35mm



**Code:** ANODES12.0KG  
Alloy. 600x145x50mm

**Code:** ANODES30KGZ  
Zinc. 600x145x50mm





Phone for your nearest

**ULLRICH ALUMINIUM SALES CENTRE**

**AUSTRALIA - 1 300 650 075**

**NEW ZEALAND - 0800 500 338**

- ALUMINIUM EXTRUSIONS
- ROLLED PRODUCTS
- FASTENINGS
- LADDERS
- SCAFFOLDS
- ULLTRACLAD CLADDING
- WINTEC WINDOWS & DOORS
- BUILDING PRODUCTS
- DECORATIVE METALS
- TEKNA MACHINERY
- ULLTIMATE SERIES WINDOWS & DOORS

**Map key:**  
 + MANUFACTURING  
 ⊕ SALES & DISTRIBUTION  
 \* EXTRUSION PLANT

Representative and franchised operations throughout the South Pacific

ULLRICH ALUMINIUM PTY LTD  
 PO Box 246 Carole Park Queensland 4300  
 20 Ron Boyle Crescent Carole Park Queensland Australia  
 Tel +61 7 3718 1400 Fax +61 7 3271 1230  
 ullrich@ullrich.com.au www.ullrich.com.au

ULLRICH ALUMINIUM CO LTD  
 PO Box 98 843 Manukau  
 Auckland 2241 New Zealand  
 Tel +64 9 262 6262 Fax +64 9 262 6265  
 alkalum@uacl.co.nz www.ullrich.co.nz