

ULLRICH ALUMINIUM



ULLTRASIGN SIGN PANEL

ALUMINIUM COMPOSITE PANEL



QUALITY • SERVICE • INTEGRITY

SIDE A	SIDE B	SIDE A	SIDE B
			
White (Gloss)	Aluminium (Natural)	Metallic Silver	White (Gloss)
			
White (Gloss)	White (Gloss)	Brushed Silver	Metallic Silver
			
Black (Gloss)	White (Gloss)	Metallic Copper	Bright Blue (Gloss)
			
Black (Matt)	White (Matt)	Brushed Gold	White (Gloss)
			
Black (Gloss)	Dark Blue (Gloss)	Mirror Finish	White (Gloss)
			
Black (Gloss)	Black (Gloss)	Titania (Satin)	Aluminium (Natural)
			
Red (Gloss)	Yellow (Gloss)	Dark Green (Gloss)	Greywacke (Matt)
			
Lime (Gloss)	Orange (Gloss)	Greywacke (Matt)	Greywacke (Matt)

SIGN PANELS CAN HAVE DIFFERENT COLOURS ON EACH SIDE - REFER CHART ABOVE FOR VARIOUS COMBINATIONS. COLOURS SHOWN ARE AN INDICATIVE REPRESENTATION ONLY - FOR COLOUR ACCURACY ASK FOR PANEL SAMPLE.

NOTE: Not all products are available ex-stock, check with your local branch for advice on availability.

Ultresign Composite Sign Panel

has a three layer composite structure.

Aluminium sheet (standard thickness 0.30mm) covers both sides.

The panel is surface coated with PE (Polyester) paint.

The centre core is low density polyethylene.

**FEATURES:**

Ultresign Composite Sign Panel is well known for its main characteristics such as:

- Pre-painted, light weight panel
- Good paintable smooth surface
- High quality colour consistency
- Very even, flat surface
- Surface enables precise printing
- High strength
- Easily fabricated with good flexibility
- Easily maintained
- Excellent sound insulation

APPLICATIONS:

- Signage and displays
- Advertisement boards
- Creative interior decoration
- Recommended for use as a Signage Panel
- *Sign Panel is Not Fire Resistant and is Not Approved for use as an Exterior Building or Construction Cladding.*

COLOURS:

- Standard colour range as per chart
- Various colour combinations and finishes available on each side. Check on range and availability of stocked items
- A variety of surface finishes are available
- Surface coated with PE (Polyester) paint

PANEL SIZES:

2440 x 1220 x 4mm

3000 x 1500 x 4mm

3600 x 1500 x 4mm

4800 x 1500 x 4mm

NOTE: Not all products are available ex-stock, check with your local branch for advice on availability.

SIGN PANEL THICKNESS	4 mm
Panel weight (kg/m ²)	4.8
Aluminium sheet thickness (mm)	0.30
Panel thickness tolerance (mm)	+/- 0.2
Panel width tolerance (mm)	+/- 2
Panel length tolerance (mm)	+/- 3
Panel diagonal tolerance (mm)	+/- 5
Aluminium sheet thickness tolerance (mm)	+/- 0.02
Paint thickness (micron)	20 +/- 2
Paint pencil hardness	>HB
Paint toughness	3 T
Impact strength (kg/cm)	50
Temperature resistance	-50°C to +90°C (subject to thermal expansion and shrinkage)
Fire resistance	NOT Fire Resistant. Is a Combustible, Flammable Material
Peel strength (180°)	>5 Newton/mm
Boiling water resistance	2 hours without change
Storage	Avoid areas affected by rain, dampness or condensation
Solvent resistance	100 times with Dimethylbenzene without change
Cleaning resistance	Over 100 times without change

ULLTRASIGN ACP FOR SIGN AND DISPLAY POLYESTER COATING WARRANTY

This warranty pertains to the polyester coating system with one coat polyester quality on the surface of the aluminium composite sign panel.

In regards to weather resistance the polyester coating has a consistent colour aging of white over 10 years and approximately 5 years for all other colours. This is dependent upon the panels being used in standard project locations and under normal conditions.

Normal conditions exclude the following:

Corrosive or aggressive environments e.g wind born sand, chemicals or chemical fumes, contamination by salt spray, submersion in water and airborne fumes or liquids.

Damage to the product caused by cut edges exposed to the environment.

Damage such as scratching caused in storage, handling, processing, during or after installation.

Panels must be cleaned frequently.

It is recommended that the panels be cleaned with a fluff free cloth using warm water (20-30°C) mixed with a neutral detergent. After cleaning, panels should be washed down with cold water.

DO NOT USE any powerful alkaline cleaning agents such as potassium hydroxide, sodium carbonate or caustic soda, or any powerful acidic products or scouring agents.

DO NOT STORE in rain, wet areas or areas with high condensation.

UA 7948**UA 7949****UA 7950****UA 1513**

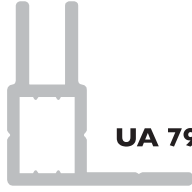
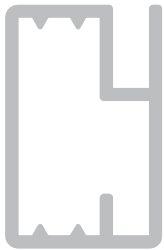
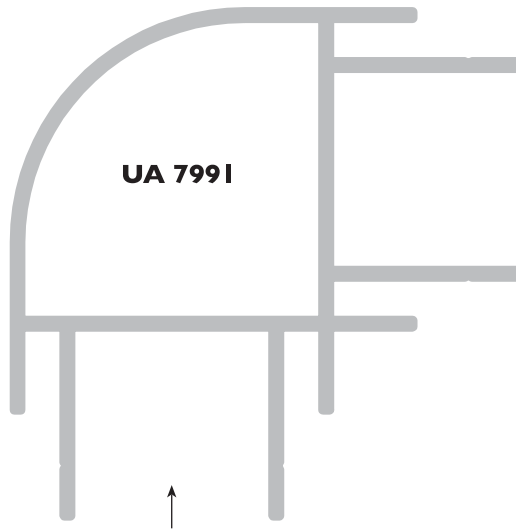
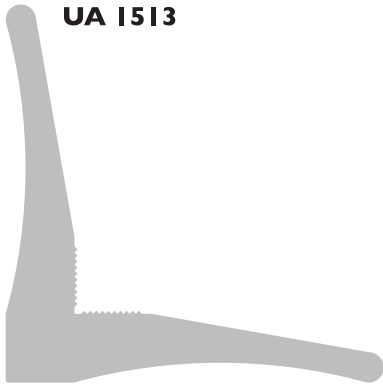
STAKE (green) fits 7988, 7989
kg/m 1.416 P 196
OAD 50 x 50

UA 1642

SQUARE HOLLOW
kg/m 0.313 P 102
OAD 25.4 x 25.4

UA 5633

STAKE (yellow) fits 7990
kg/m 1.725 P 352
OAD 50 x 49.5

UA 7951**UA 7989****UA 7988****UA 7990****UA 7991****UA 1513****UA 1642****UA 7948**

4mm SIGN PANEL CAP
kg/m 0.167 P 89
OAD 26.5 x 8

UA 7949

4mm SIGN PANEL JOINTER
kg/m 0.305 P 160
OAD 51.5 x 8

UA 7950

4mm SIGN PANEL INT CORNER
kg/m 0.334 P 172
OAD 33 x 33

UA 7951

4mm SIGN PANEL EXT CORNER
kg/m 0.366 P 184
OAD 32.56 x 32.56

UA 7988

4mm SIGN PANEL ANGLE CHANNEL
kg/m 0.311 P 118
OAD 24.3 x 24.1

UA 7989

4mm SIGN PANEL TEE CHANNEL
kg/m 0.367 P 146
OAD 38.3 x 24.1

UA 7990

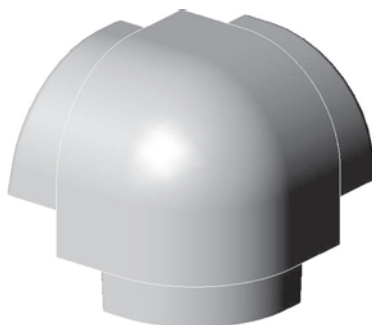
4mm SIGN PANEL FRAME
kg/m 0.481 P 125
OAD 32 x 20.5

UA 7991

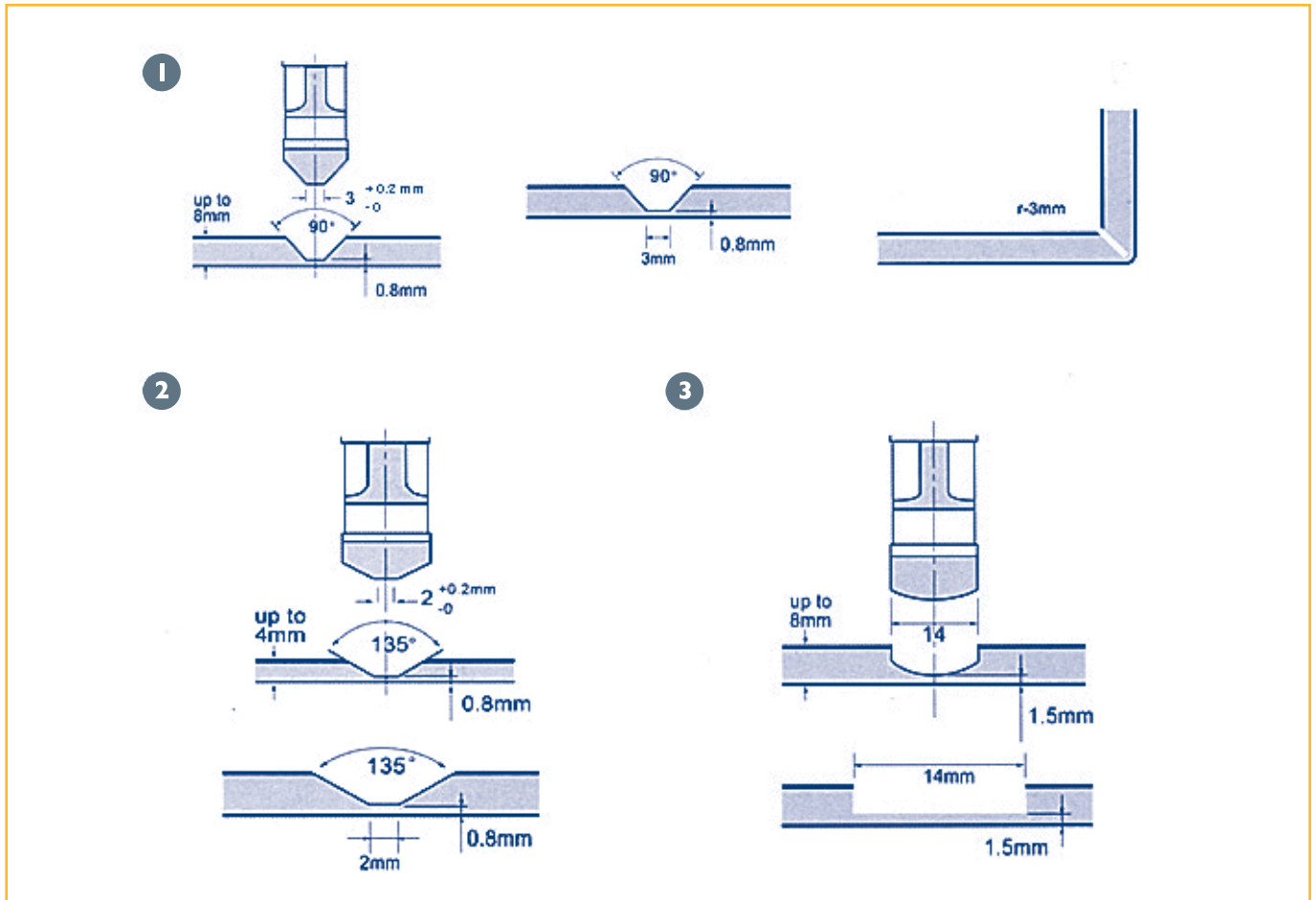
4mm SIGN PANEL BOX FRAME
kg/m 1.269 P 443
OAD 67.4 x 67.4

UA 5633**UC1508 CAST BOX CORNER**

Fits UA 7991



DIAGRAMS ACTUAL SIZE UNLESS
OTHERWISE INDICATED.
DIAGRAMS ARE SCHEMATIC ONLY
AND NOT INTENDED AS
SPECIFICATION DRAWINGS.
OAD = OVERALL DIMENSIONS
P = EXT PERIPHERY



- 1 By means of a knife at 90° bevel angle, the right angle configuration containing an inner angle $r=3\text{mm}$ can be manufactured.
- 2 The acute angle (45°) configuration containing an inner angle $r=2\text{mm}$ can be manufactured by means of a knife at 135° bevel angle.
- 3 The right angle configuration containing an inner angle $r=7\text{mm}$ can be manufactured by means of a knife at flat angle.

FABRICATION INFORMATION:

- Ensure that before starting the grooving and bending process that the environment temperature is over 20°C.
- The exterior aluminium skin should be visible through the polyethylene core at the valley of rout. V grooving bottom should not reach the back of the aluminium skin and leave about 0.2-0.4mm of polyethylene core. Extreme care should be taken not to touch the exterior aluminium skin with the blade. Slight variation can occur due to the thickness changes in the sheet; constant depth of the rout ensures a good smooth line when the edge is folded.
- By grooving only one side, the sheet can be bent either upward or downward to create either an inside or outside corner.
- Note that as a result of the slight radius produced when bending, your finished panel dimensions will be 2-4mm larger.

For additional information on any Ullrich product contact your Ullrich Sales Consultant. Refer to the back of this brochure for your nearest Ullrich Aluminium Sales Centre, or phone 0800 500 338 for assistance.

ULLRICH ALUMINIUM CO LTD
PO Box 98 843 Manukau City Auckland 2241
118 Wiri Station Road Wiri 2104 New Zealand
Tel +64 9 262 6262 Fax +64 9 262 6266
alkalum@uacl.co.nz www.ullrich.co.nz





SAWING



CUTTING



BENDING



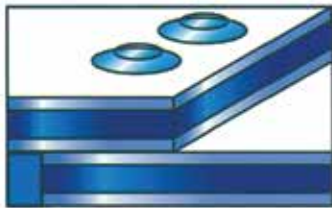
FOLDING



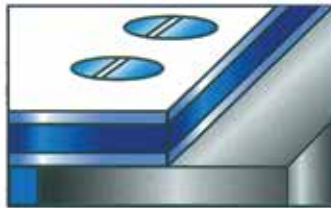
DRILLING



PUNCHING



RIVETING



SCREWING



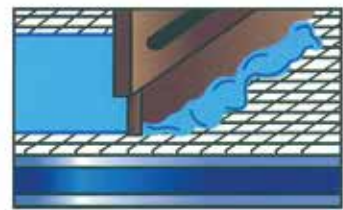
HOT AIR WELDING



GLUEING



DECORATIVE WORK



SCREEN PRINTING



DIGITAL PRINTING



PHOTO MOUNTING



SPRAYING



Phone for your nearest

ULLRICH ALUMINIUM SALES CENTRE

AUSTRALIA - 1300 650 075

NEW ZEALAND - 0800 500 338

- ALUMINIUM EXTRUSIONS
- ALUMINIUM SHEETS
- ROLLED PRODUCTS
- MARINE & TRANSPORT SECTIONS
- FASTENINGS
- LADDERS
- MOBILE SCAFFOLDS
- ULLTRACLAD CLADDING
- DESIGNER INTERNAL PARTITIONING
- PLANIT DESIGN DISPLAY UNITS

Representative operations throughout the South Pacific

ULLRICH ALUMINIUM PTY LTD
PO Box 246 Carole Park Queensland 4300
20 Ron Boyle Crescent Carole Park Queensland Australia
Tel +61 7 3718 1400 Fax +61 7 3271 1230
ullrich@ullrich.com.au www.ullrich.com.au

ULLRICH ALUMINIUM CO LTD
PO Box 98 843 Manukau City Auckland 2241
118 Wiri Station Road Wiri 2104 New Zealand
Tel +64 9 262 6262 Fax +64 9 262 6266
alkalum@uac.co.nz www.ullrich.co.nz