

DIE No	DESCRIPTION
UA 4528	STANDARD BOARD
UA 4532	WINDOW FLASHING
UA 4533	HEAD FLASHING
UA 4535	LOCATOR CLIP
UA 4862	BOARD STARTER
UA 4863	VERTICAL BOARD STARTER
UA 4917	TEE BOARD
UA 5059	TRADITIONAL BOARD
UA 5104	FULL CORRUGATE BOARD
UA 5831	SOFFIT CLIP BASE
UA 5832	SOFFIT 65mm CLIP TOP
UA 5833	SOFFIT 30mm CLIP TOP
UA 6323	SCALLOPED JOINTER TOP
UA 6324	2 PIECE JOINTER BASE
AUS 6478	SHADOLINE FLAT BOARD
UA 6608	FEMALE SCALLOPED CORNER
UA 6609	MALE SCALLOPED CORNER
UA 6975	SHADOLINE BOARD
UA 7094	FEMALE FLAT CORNER
UA 7095	MALE FLAT CORNER
UA 7096	FLAT JOINTER TOP
UA 7401	INFINITY BOARD
UA 7726	SHADO 100 BOARD
UA 7837	FIN BOARD
UA 7868	SHADO 140 BOARD

DIAGRAMS ACTUAL SIZE UNLESS OTHERWISE INDICATED.  
 DIAGRAMS ARE SCHEMATIC ONLY AND NOT INTENDED AS SPECIFICATION DRAWINGS.  
**OAD** = OVERALL DIMENSIONS  
**P** = EXT PERIPHERY  
 © ULLRICH ALUMINIUM CO LTD



NOTE: Not all products are available ex-stock, check with your local branch for advice on availability.

**NB: ULLTRACLAD PRODUCTS SHOULD BE INSTALLED BY APPROVED INSTALLERS  
 FORWARD ALL ENQUIRIES TO THE BUILDING PRODUCTS DIVISION**

Edition 16 - 2018

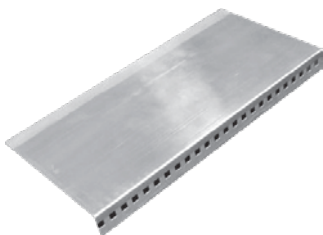
**UA 4528** UltraClad  
STANDARD BOARD  
kg/m 1.003 P 501  
OAD 190.5 x 15

**UA 6975** UltraClad  
SHADOLINE BOARD  
kg/m 1.167 P 562  
OAD 205 x 15  
Can be fitted VERTICALLY

**UA 7401** UltraClad  
INFINITY BOARD  
kg/m 1.159 P 546  
OAD 205 x 15  
Can be fitted VERTICALLY

**UA 7726** UltraClad  
SHADO 100 BOARD  
kg/m 1.303 P 629  
OAD 205.16 x 15  
Can be fitted VERTICALLY

**UA 7868** UltraClad  
SHADO 140 BOARD  
kg/m 1.274 P 614  
OAD 205.16 x 15  
Can be fitted VERTICALLY



ALUMINIUM VERMIN STRIP  
OAD 120 x 20  
Length 2400mm  
Square holes 5 x 5mm  
Code: ALVERMIN2.4

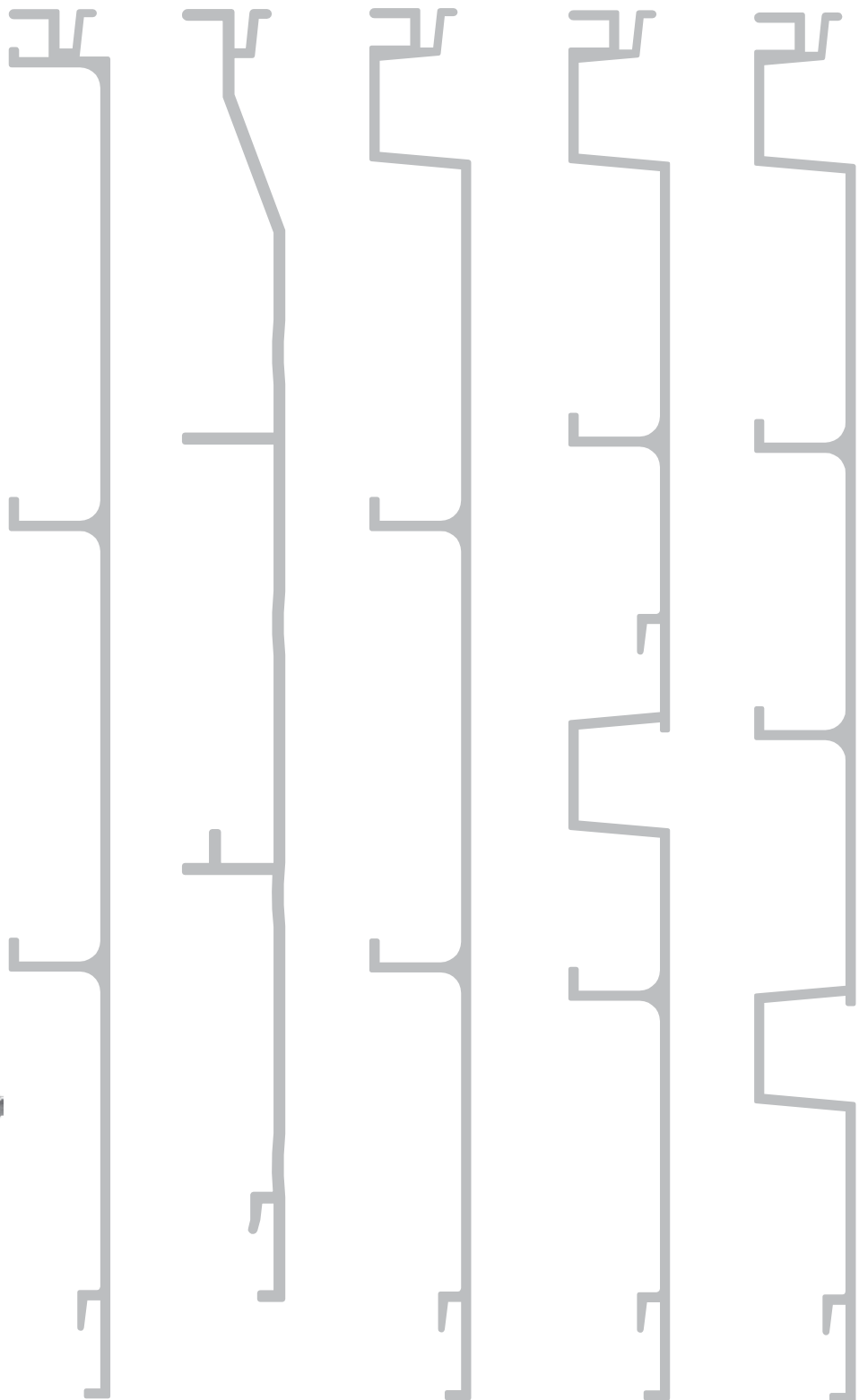
UA 7401

UA 4528

UA 6975

UA 7726

UA 7868



DIAGRAMS ACTUAL SIZE UNLESS OTHERWISE INDICATED. DIAGRAMS ARE SCHEMATIC ONLY AND NOT INTENDED AS SPECIFICATION DRAWINGS.

**OAD** = OVERALL DIMENSIONS  
**P** = EXT PERIPHERY

© ULLRICH ALUMINIUM CO LTD

**UA 5104**



**UA 5059**



**UA 4917**



**UA 7837**



**UA 4917** UlltraClad  
TEE BOARD  
kg/m 0.886 P 444  
OAD 150 x 15

**UA 5059** UlltraClad  
TRADITIONAL BOARD  
kg/m 0.842 P 424  
OAD 157 x 15

**UA 5104** UlltraClad  
FULL CORRUGATE BOARD  
kg/m 1.299 P 619  
OAD 203.5 x 15

**UA 7837** UlltraClad  
FIN BOARD  
kg/m 3.445 P 857  
OAD 193 x 40  
Can be fitted VERTICALLY

DIAGRAMS ACTUAL SIZE UNLESS OTHERWISE INDICATED.  
DIAGRAMS ARE SCHEMATIC ONLY AND NOT INTENDED AS SPECIFICATION DRAWINGS.  
OAD = OVERALL DIMENSIONS  
P = EXT PERIPHERY  
© ULLRICH ALUMINIUM CO LTD



NOTE: Not all products are available ex-stock, check with your local branch for advice on availability.

**NB: ULLTRACLAD PRODUCTS SHOULD BE INSTALLED BY APPROVED INSTALLERS  
FORWARD ALL ENQUIRIES TO THE BUILDING PRODUCTS DIVISION**

**UA 4532** UltraClad  
WINDOW FLASHING  
kg/m 0.420 P 214  
OAD 65 x 18.5

**UA 4533** UltraClad  
HEAD FLASHING  
kg/m 0.497 P 249  
OAD 78.77 x 37.33

**UA 4535** UltraClad  
LOCATOR CLIP  
With Screws ( Bags 100 )  
kg/m 0.198 P 105  
OAD 35.8 x 13.9

**UA 4862** UltraClad  
BOARD STARTER  
kg/m 0.448 P 228  
OAD 94.5 x 15

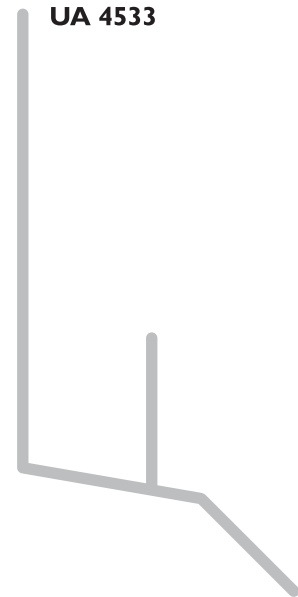
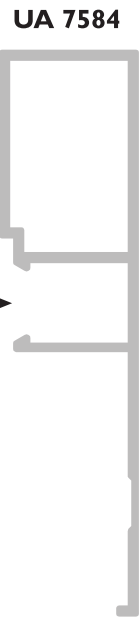
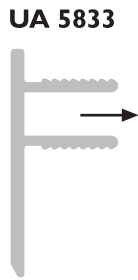
**UA 4863** UltraClad  
VERTICAL BOARD STARTER  
kg/m 0.554 P 280  
OAD 95 x 18.5

**UA 5831** UltraClad  
SOFFIT CLIP BASE  
kg/m 0.416 P 198  
OAD 70 x 15

**UA 5832** UltraClad  
SOFFIT 65mm CLIP TOP  
kg/m 0.367 P 189  
OAD 65 x 14

**UA 5833** UltraClad  
SOFFIT 30mm CLIP TOP  
kg/m 0.215 P 119  
OAD 30 x 14

**UA 7584** UltraClad  
JAMB / SILL CLIP  
kg/m 0.600 P 222  
OAD 75 x 18.5



**CORNER STAKE - PLASTIC**



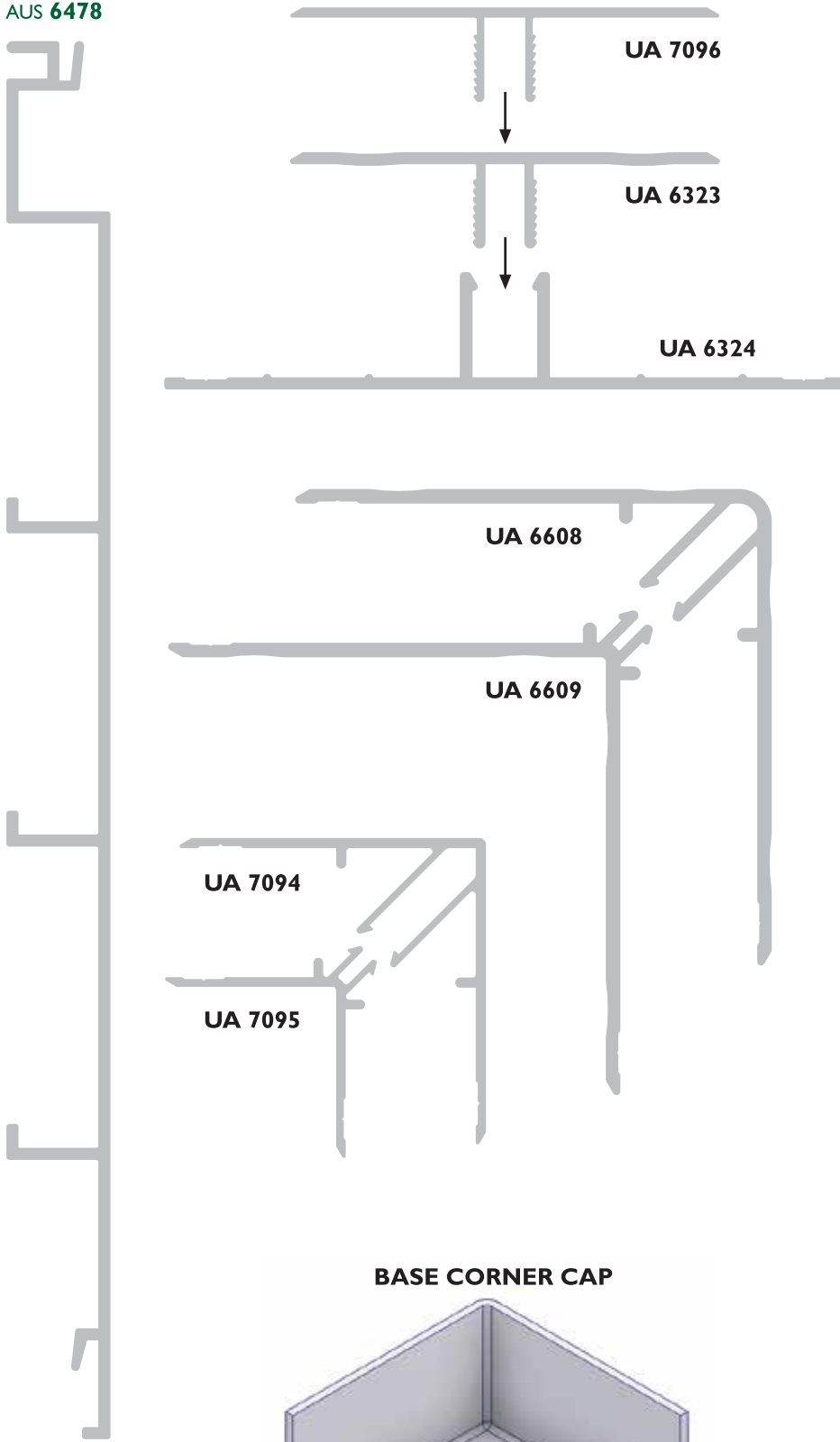
Fits 7584  
Code: CLADSTAKECNR



DIAGRAMS ACTUAL SIZE UNLESS OTHERWISE INDICATED, DIAGRAMS ARE SCHEMATIC ONLY AND NOT INTENDED AS SPECIFICATION DRAWINGS.  
OAD = OVERALL DIMENSIONS  
P = EXT PERIPHERY

© ULLRICH ALUMINIUM CO LTD

AUS 6478



**UA 6323** UlltraClad  
SCALLOPED JOINTER TOP  
kg/m 0.338 P 184  
OAD 63 x 13.9

**UA 6324** UlltraClad  
2 PIECE JOINTER BASE  
kg/m 0.536 P 269  
OAD 100 x 17

**AUS 6478** UlltraClad  
SHADOLINE FLAT BOARD  
kg/m 1.207 P 599  
OAD 205 x 15

**UA 6608** UlltraClad  
FEMALE SCALLOPED CORNER  
kg/m 0.680 P 355  
OAD 70.1 x 70.1

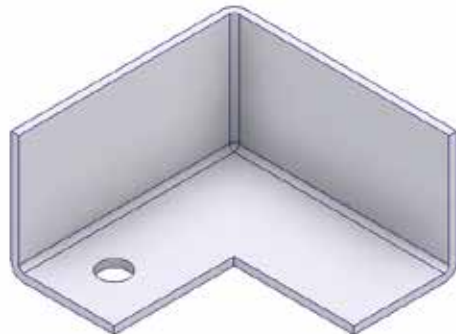
**UA 6609** UlltraClad  
MALE SCALLOPED CORNER  
kg/m 0.594 P 300  
OAD 71.3 x 71.3

**UA 7094** UlltraClad  
FEMALE FLAT CORNER  
kg/m 0.465 P 257  
OAD 45 x 45

**UA 7095** UlltraClad  
MALE FLAT CORNER  
kg/m 0.266 P 147  
OAD 32.81 x 32.81

**UA 7096** UlltraClad  
FLAT JOINTER TOP  
kg/m 0.338 P 184  
OAD 63 x 13.9

**BASE CORNER CAP**



Fits 7094  
Code: CLADCORNERCAP

DIAGRAMS ACTUAL SIZE UNLESS OTHERWISE INDICATED.  
DIAGRAMS ARE SCHEMATIC ONLY AND NOT INTENDED AS SPECIFICATION DRAWINGS.  
OAD = OVERALL DIMENSIONS  
P = EXT PERIPHERY  
© ULLRICH ALUMINIUM CO LTD



NOTE: Not all products are available ex-stock, check with your local branch for advice on availability.

**NB: ULLTRACLAD PRODUCTS SHOULD BE INSTALLED BY APPROVED INSTALLERS  
FORWARD ALL ENQUIRIES TO THE BUILDING PRODUCTS DIVISION**